

FCR 21/120

ACCESSORIES

PRODUCT-NO.: 071331

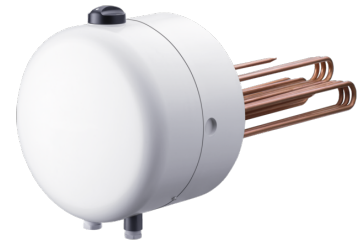
The main features

Replaceable copper heating element

For matching to individual usage scenarios

High hot water convenience thanks to powerful heating elements

Variable temperature setting via rotary selector



FCR 21/60

Product-No.: 071330



FCR 28/120

Product-No.: 071332



FCR 28/120 E

Product-No.: 000694



FCR 28/180

Product-No.: 071333



FCR 28/180 E

Product-No.: 000695



Type	FCR 21/60	FCR 21/120	FCR 28/120
Part no.	071330	071331	071332

Technical data

Connected load ~ 230 V	2-4 kW	4 kW	
Connected load ~ 400 V	2-6 kW	8/12 kW	6/12 kW
Power supply	1/N/PE, 3/N/PE	1/N/PE, 2/N/PE, 3/PE	3/PE
Rated voltage	230/400 V	230/400 V	400 V
Coil voltage	230 V	230 V	230 V
Frequency	50/60 Hz	50/60 Hz	50 Hz
Version	Dual/single circuit	Single circuit	Dual/single circuit
Integral contactor	X	-	X
IP rating	IP24	IP24	IP24
Immersion depth	400 mm	400 mm	450 mm
Flange diameter	210 mm	210 mm	280 mm



Type	FCR 28/120 E	FCR 28/180	FCR 28/180 E
Part no.	000694	071333	000695

Technical data

Connected load ~ 230 V			
Connected load ~ 400 V	12 kW	9/18 kW	18 kW
Power supply	3/PE	3/PE	3/PE
Rated voltage	400 V	400 V	400 V
Coil voltage	400 V	230 V	400 V
Frequency	50 Hz	50 Hz	50 Hz
Version	Single circuit	Dual/single circuit	Single circuit
Integral contactor	X	X	X
IP rating	IP24	IP24	IP24
Immersion depth	325 mm	450 mm	325 mm
Flange diameter	280 mm	280 mm	280 mm

Contact information

You have questions? We appreciate to help you:

Call **+49 5531 - 7020**

Write an email to **info@stiebel-eltron.com**

Installation information

Please ask your local power supply utility or a registered electrician to install appliances that are not fully wired, i.e. ready to plug in. The electrician should also be able to assist you with obtaining the agreement of the respective power supply utility required for the appliance installation.