

LA 100 UB

DECENTRALISED

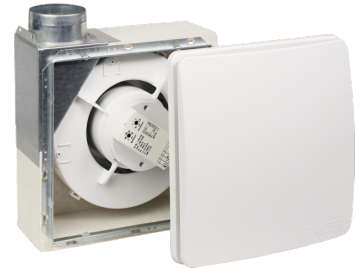
PRODUCT-NO.: 205773

Turn every space into an oasis of fresh air

This fan unit is highly attuned to stale air. To be precise, the appliance is equipped with a sensor. It determines when the room needs ventilating. Humidity and the prevailing temperature also influence the exchange of air.

Bringing flexibility to air exchange

For extra convenience, all models are equipped with switch-on delay and run-on time functions, and can also be extended with a humidity sensor. These allow you to define when air exchange should start and stop. This is a useful feature for when you need to leave home shortly after showering or cooking. When you return, air with just the right humidity will be waiting to greet you.



LA 100 A

Product-No.: 205771



LA 100 U

Product-No.: 205772

The main features

Decentralised extractor for rooms with and without windows

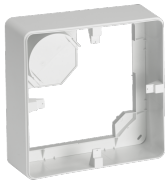
For use in traditional extract air areas, such as the bathroom, kitchen and WC

Modernisation solution that is easy to install

Ideal for combination with our decentralised ventilation units

Energy efficient EC fan for low noise pollution at high air flow rates

Set-Components 1



Type	LA 100 G-A	LA 100 G-U	LA 100 G-UB
Product set	LA 100 A	LA 100 U	LA 100 UB

Technical data

Height	270 mm	280 mm	255 mm
Width	270 mm	295 mm	255 mm
Depth	136 mm	74 mm	85 mm

Set-Components 2



Type	LA 100 VE	LA 100 VE	LA 100 VE
Product set	LA 100 A	LA 100 U	LA 100 UB

Technical data

Max. power consumption	15.3 W	15.3 W	15.3 W
Power supply	1/N 230 V 50 Hz	1/N 230 V 50 Hz	1/N 230 V 50 Hz
Height	260 mm	260 mm	260 mm
Width	260 mm	260 mm	260 mm
Depth	50 mm	50 mm	50 mm
Air flow rate	20/30/40/50/60/100 m³/h	20/30/40/50/60/100 m³/h	20/30/40/50/60/100 m³/h

Contact information

You have questions? We appreciate to help you:

Call **+49 5531 - 7020**

Write an email to **info@stiebel-eltron.com**

Installation information

Please ask your local power supply utility or a registered electrician to install appliances that are not fully wired, i.e. ready to plug in. The electrician should also be able to assist you with obtaining the agreement of the respective power supply utility required for the appliance installation.