

LTM dezent 600/800 Z-PSS

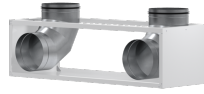
DECENTRALISED

PRODUCT-NO.: 237672





Type	LTM dezent 600/800 Z-PSS	LTM dezent C-PSS	LTM dezent RWA
Part no.	237672	237673	237674
Technical data			
Width	56 mm	26 mm	477 mm
Length	0,8 m	1 m	1,688 m



Type	LTM dezent ULB-90
Part no.	237634
Technical data	
Width	600 mm
Length	1,688 m

Contact information

You have questions? We appreciate to help you:

Call **+49 5531 - 7020**

Write an email to **info@stiebel-eltron.com**

Installation information

Please ask your local power supply utility or a registered electrician to install appliances that are not fully wired, i.e. ready to plug in. The electrician should also be able to assist you with obtaining the agreement of the respective power supply utility required for the appliance installation.