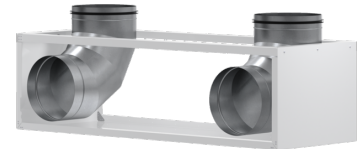


# LTM dezent 300 ULB-90

DECENTRALISED

PRODUCT-NO.: 237626



**LTM dezent 300 Z-PSS**

Product-No.: 237671



**LTM dezent 600/800 Z-PSS**

Product-No.: 237672



**LTM dezent C-PSS**

Product-No.: 237673



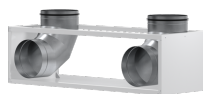
**LTM dezent RWA**

Product-No.: 237674



**LTM dezent ULB-90**

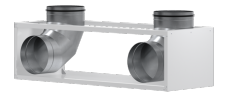
Product-No.: 237634



Type	LTM dezent 300 ULB-90	LTM dezent 300 Z-PSS	LTM dezent 600/800 Z-PSS
Part no.	237626	237671	237672

## Technical data

Width	400 mm	56 mm	56 mm
Length	1,202 m	0,52 m	0,8 m



Type	LTM dezent C-PSS	LTM dezent RWA	LTM dezent ULB-90
Part no.	237673	237674	237634

### Technical data

Width	26 mm	477 mm	600 mm
Length	1 m	1,688 m	1,688 m

## **Contact information**

You have questions? We appreciate to help you:

Call **+49 5531 - 7020**

Write an email to **[info@stiebel-eltron.com](mailto:info@stiebel-eltron.com)**

## **Installation information**

Please ask your local power supply utility or a registered electrician to install appliances that are not fully wired, i.e. ready to plug in. The electrician should also be able to assist you with obtaining the agreement of the respective power supply utility required for the appliance installation.