

AWG 315 SR

ACCESSORIES

PRODUCT-NO.: 233836

The main features

Robust sheet steel design

Weather grille painted grey

Telescopic for optimal adjustment



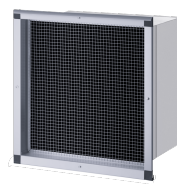
AWG 315 GL

Product-No.: 232955



AWG 315 L

Product-No.: 231039



| Type | AWG 315 GL | AWG 315 L | AWG 315 SR |
|----------|------------|-----------|------------|
| Part no. | 232955 | 231039 | 233836 |

Technical data

| | | | |
|----------------------|-------------------------------------|---------------------------|--|
| Height | 490 mm | 477 mm | 490 mm |
| Width | 483 mm | 479 mm | 483 mm |
| Depth | 627 mm | 625 mm | 627 mm |
| Nominal diameter | 315 mm | 315 mm | 315 mm |
| Min. outlet aperture | 450x450 mm | 450x450 mm | 450x450 mm |
| Wall thickness | 280 - 500 mm | 280 - 500 mm | 280 - 500 mm |
| Max. air flow rate | 1300 m³/h | 1500 m³/h | 1300 m³/h |
| Colour | RAL 9006 | Aluminium, anodised | silver-metallic |
| Material | Sheet steel | Sheet steel | Sheet steel |
| Version | With grey painted weather grille | For light well version | With weather grille painted with metallic silver |

Contact information

You have questions? We appreciate to help you:

Call **+49 5531 - 7020**

Write an email to **info@stiebel-eltron.com**

Installation information

Please ask your local power supply utility or a registered electrician to install appliances that are not fully wired, i.e. ready to plug in. The electrician should also be able to assist you with obtaining the agreement of the respective power supply utility required for the appliance installation.