

## AWG 315 L

ACCESSORIES

PRODUCT-NO.: 231039

### The main features

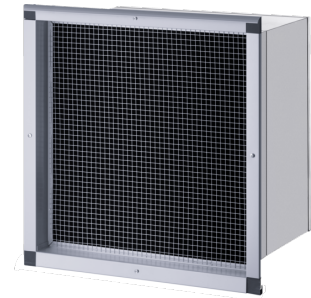
Robust sheet steel design

---

Weather grille painted grey

---

Telescopic for optimal adjustment



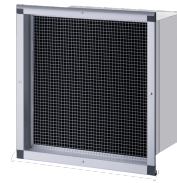
**AWG 315 GL**

Product-No.: 232955



**AWG 315 SR**

Product-No.: 233836



Type	AWG 315 GL	AWG 315 L	AWG 315 SR
Part no.	232955	231039	233836

## Technical data

Height	490 mm	477 mm	490 mm
Width	483 mm	479 mm	483 mm
Depth	627 mm	625 mm	627 mm
Nominal diameter	315 mm	315 mm	315 mm
Min. outlet aperture	450x450 mm	450x450 mm	450x450 mm
Wall thickness	280 - 500 mm	280 - 500 mm	280 - 500 mm
Max. air flow rate	1300 m <sup>3</sup> /h	1500 m <sup>3</sup> /h	1300 m <sup>3</sup> /h
Colour	RAL 9006	Aluminium, anodised	silver-metallic
Material	Sheet steel	Sheet steel	Sheet steel
Version	With grey painted weather grille	For light well version	With weather grille painted with metallic silver

## **Contact information**

You have questions? We appreciate to help you:

Call **+49 5531 - 7020**

Write an email to **[info@stiebel-eltron.com](mailto:info@stiebel-eltron.com)**

## **Installation information**

Please ask your local power supply utility or a registered electrician to install appliances that are not fully wired, i.e. ready to plug in. The electrician should also be able to assist you with obtaining the agreement of the respective power supply utility required for the appliance installation.