

## LSWP 315-2 SG Set

ACCESSORIES

PRODUCT-NO.: 238565

### The main features

Flexible air hose with quick-fit adaptor

---

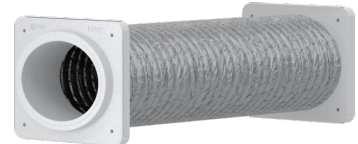
For connection of outdoor and exhaust air with air source heat pumps

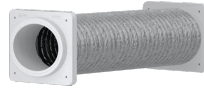
---

Sound absorbent and thermal insulating covering

---

Quick and straightforward installation





Type	LSWP 315-2 SG Set
Part no.	238565

#### Technical data

Nominal diameter	315 mm
Length	2000 mm
Thermal insulation thickness	50 mm
Colour of air hose	grey

## **Contact information**

You have questions? We appreciate to help you:

Call **+49 5531 - 7020**

Write an email to **[info@stiebel-eltron.com](mailto:info@stiebel-eltron.com)**

## **Installation information**

Please ask your local power supply utility or a registered electrician to install appliances that are not fully wired, i.e. ready to plug in. The electrician should also be able to assist you with obtaining the agreement of the respective power supply utility required for the appliance installation.