

## AWU-HS 5

ACCESSORIES

PRODUCT-NO.: 207719

### The main features

Hose pack with flow and return line made of corrugated stainless steel pipe which can be trimmed

---

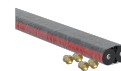
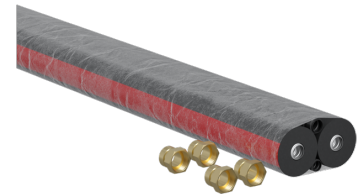
Suitable for new build and modernisation projects

---

Can be combined with freely routed KG/HT pipe DN200

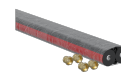
---

Easy insertion thanks to friction-optimised casing



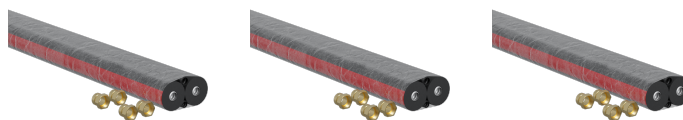
**AWU-HS 2.5**

Product-No.: 207718



**AWU-HS 10**

Product-No.: 207720



Type	AWU-HS 2.5	AWU-HS 5	AWU-HS 10
Part no.	207718	207719	207720

## Technical data

For pressure hose size DN	25	25	25
Length	2,5 m	5 m	10 m
Thermal insulation thickness	100 mm	100 mm	100 mm
External diameter incl. insulation	320 mm	320 mm	320 mm

## **Contact information**

You have questions? We appreciate to help you:

Call **+49 5531 - 7020**

Write an email to **[info@stiebel-eltron.com](mailto:info@stiebel-eltron.com)**

## **Installation information**

Please ask your local power supply utility or a registered electrician to install appliances that are not fully wired, i.e. ready to plug in. The electrician should also be able to assist you with obtaining the agreement of the respective power supply utility required for the appliance installation.