

AWU-HS 2.5

ACCESSORIES

PRODUCT-NO.: 207718

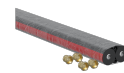
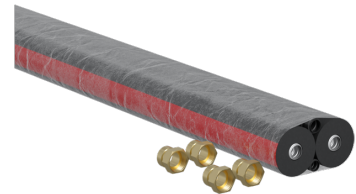
The main features

Hose pack with flow and return line made of corrugated stainless steel pipe which can be trimmed

Suitable for new build and modernisation projects

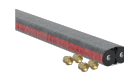
Can be combined with freely routed KG/HT pipe DN200

Easy insertion thanks to friction-optimised casing



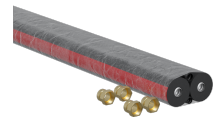
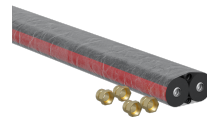
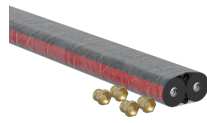
AWU-HS 5

Product-No.: 207719



AWU-HS 10

Product-No.: 207720



Type	AWU-HS 2.5	AWU-HS 5	AWU-HS 10
Part no.	207718	207719	207720

Technical data

For pressure hose size DN	25	25	25
Length	2,5 m	5 m	10 m
Thermal insulation thickness	100 mm	100 mm	100 mm
External diameter incl. insulation	320 mm	320 mm	320 mm

Contact information

You have questions? We appreciate to help you:

Call **+49 5531 - 7020**

Write an email to **info@stiebel-eltron.com**

Installation information

Please ask your local power supply utility or a registered electrician to install appliances that are not fully wired, i.e. ready to plug in. The electrician should also be able to assist you with obtaining the agreement of the respective power supply utility required for the appliance installation.