

AHP-FW 25-0.4

ACCESSORIES

PRODUCT-NO.: 208863

The main features

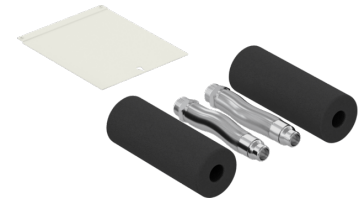
Optimised for air source heat pumps with R290 refrigerant

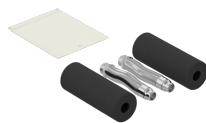
Quick connection to the heat pump for fast installation

Suitable for all performance classes of air source heat pumps with R290 refrigerant

Simplified connection thanks to extending hoses

High quality appearance of the connection lines routed downwards inside the heat pump





| | |
|----------|---------------|
| Type | AHP-FW 25-0.4 |
| Part no. | 208863 |

Technical data

| | |
|-------------------------------------|-------|
| Connection, heating and source side | G 1 |
| Length | 0,4 m |

Contact information

You have questions? We appreciate to help you:

Call **+49 5531 - 7020**

Write an email to **info@stiebel-eltron.com**

Installation information

Please ask your local power supply utility or a registered electrician to install appliances that are not fully wired, i.e. ready to plug in. The electrician should also be able to assist you with obtaining the agreement of the respective power supply utility required for the appliance installation.