

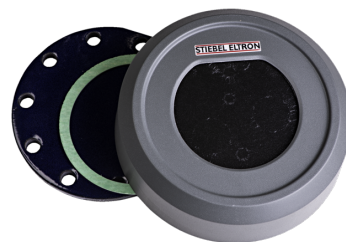
## B28

ACCESSORIES

PRODUCT-NO.: 076103

### The main features

Ideal for sealing the floor mounted cylinder if not all flanged apertures are used





Type	B21	B28
Part no.	076102	076103
Technical data		
Flange diameter	210 mm	280 mm

## **Contact information**

You have questions? We appreciate to help you:

Call **+49 5531 - 7020**

Write an email to **[info@stiebel-eltron.com](mailto:info@stiebel-eltron.com)**

## **Installation information**

Please ask your local power supply utility or a registered electrician to install appliances that are not fully wired, i.e. ready to plug in. The electrician should also be able to assist you with obtaining the agreement of the respective power supply utility required for the appliance installation.