

# Natural sustainability Grounded in our technology

Heating, cooling and hot water with geothermal energy





Our land yields plenty of goodness: carrots, radishes, basil, chives, bell peppers and much more. It even takes care of us in winter – our heat pump uses energy from the ground to keep us warm indoors.

Comfort through technology



# Give your personal energy transition a boost

Renewable energies are the key to a sustainable heat supply. With a heat pump, you not only improve your personal carbon footprint, but also create secure prospects for your home. That's the way to achieve sustainable wellbeing today.

Making your home energy efficient has become an important component in combating global climate change. There is enormous potential here to reduce energy costs and make the switch to heating with renewables. The biggest energy guzzler in residential buildings is the heating system. Almost 80 % of the energy you use goes on heating and hot water.

## Set your sights on a futureproof supply

The time is up for using fossil fuels to generate heat. By facilitating a green transition for our blue planet with sustainable technologies, we are taking on our share of responsibility for future generations. A heat pump allows you to utilise renewable energy for hot water, heating, ventilation and cooling in your home. This improves your personal carbon footprint, makes you more independent and best of all: you don't lose the heating and hot water convenience you are used to. Powered by green electricity, the heat pump is simply unbeatable in terms of sustainability.



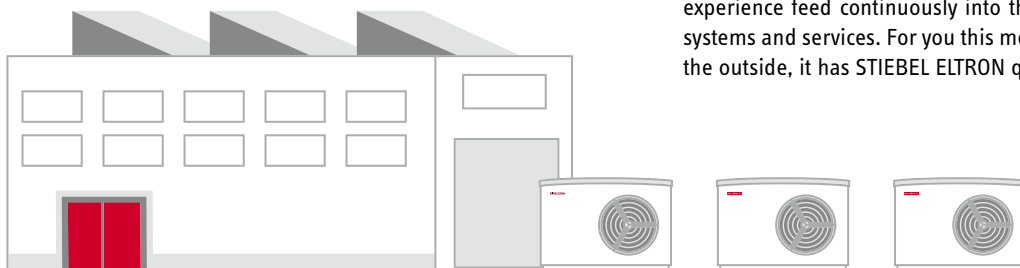
[www.stiebel-eltron.com/promise](http://www.stiebel-eltron.com/promise)



# Heat pumps from STIEBEL ELTRON – here's why

## Quality and durability

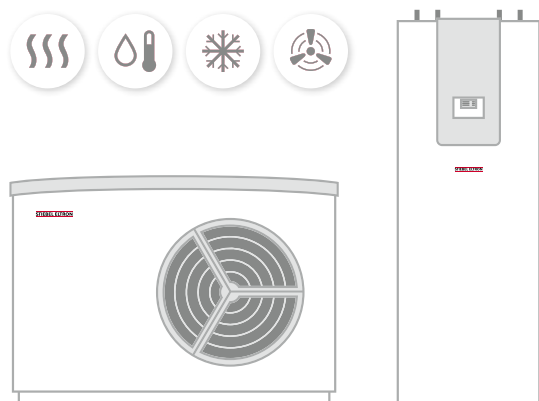
We have been developing and manufacturing heat pumps in our own production facilities in Germany with strict quality controls for almost 50 years. Since the beginning in 1976 in Holzminden, two German and four international heat pump production facilities have come online. With each of the 500,000 heat pumps we have put into use, we continue to learn and strive to always keep getting better. These many years of experience feed continuously into the development of our products, systems and services. For you this means: if it says STIEBEL ELTRON on the outside, it has STIEBEL ELTRON quality on the inside.



## Efficiency

Thanks to their superior efficiency, our heat pumps cut down on both CO<sub>2</sub> emissions and energy costs. Based on an integrated concept, our heat pump sets are suitable for any home or property, and have been developed and tested for winters in our climate zone.

Even in existing buildings, they work efficiently at very low outside temperatures and supply everything your home needs: room heating and cooling as well as domestic hot water heating.



## Flexibility

STIEBEL ELTRON offers highly efficient products and services for heating, cooling, ventilation and hot water in various different types of buildings. You decide whether your heat pump uses air, the ground or water as its energy source. As a result, you are assured of the right solution for every building, installation situation and feel-good temperature. STIEBEL ELTRON heat pumps are so quiet that your neighbours will love them too. Our heat pumps and hot water cylinders come with many components already integrated. This not only saves time during installation, but also reduces the space requirement and keeps the boiler room tidy.

For efficient use of your PV power, our heat pumps can be combined with any PV system and battery storage unit. You can choose from any PV manufacturer and PV system and benefit from intelligent energy management.

## Consulting and service

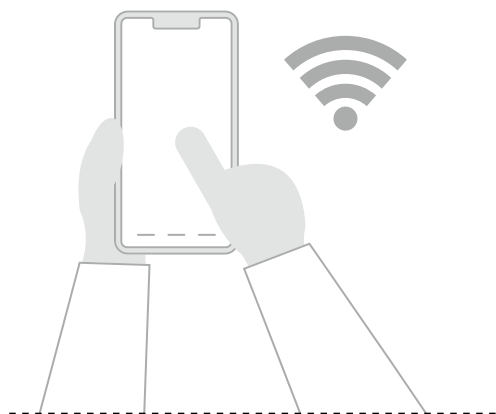
We work with qualified contractors all over Germany for consulting, design, installation and maintenance of your heat pump system. Our trade partners have access to a comprehensive training programme. This is how we share our knowledge as a leading heat pump manufacturer.

If anything should go wrong, our extensive customer service network provides direct, on-site support. And thanks to our 10 year spare parts guarantee, our original spare parts will continue to be rapidly available even when you have been using one of our heat pumps for a long time.



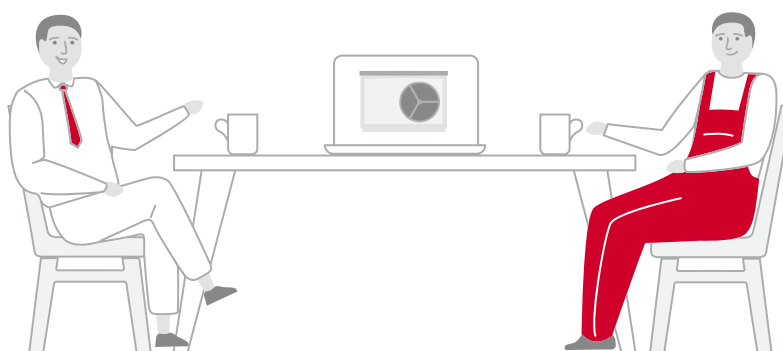
## Easy operation

Connect your STIEBEL ELTRON heat pump to the internet and operate it intuitively from your smartphone. Every STIEBEL ELTRON heat pump system can also, of course, be easily controlled by means of our heat pump manager.



## Find the right heat pump for your home

Let one of our qualified contractors advise you or use our configurator for convenient initial guidance from the comfort of your own home.



# Give yourself room to feel good

The temperature affects how healthy and alert you are. The temperature range in which you constantly feel at your energetic best is narrow. Our top of the range ground source heat pumps ensure a healthy room climate. If they are equipped with a cooling function, they even do so in summer as well. The appliance cools the heating water that flows through your underfloor heating system, which lowers the room temperature. This increases your living comfort and vitality.

#### **Good reasons to enjoy your home comforts**

- › Pleasant room temperatures all year round
- › Easier to relax and feel good
- › Greater vitality and alertness
- › Efficient heating and cooling in one appliance



# Your energy efficiency on solid ground

It is constantly warm below the surface of the ground, even when it is bitterly cold outside. You can benefit from this fact with a ground source heat pump. Using liquid brine, the heat pump collects heat from the ground and converts it into energy for heating and hot water.

The ratio of heating output to the required electricity input is measured in heat pumps by the “coefficient of performance” (COP). Your ground source heat pump from STIEBEL ELTRON achieves a COP of up to five. This means that even at temperatures below freezing, it generates up to five parts heat from one part electricity. Since your geothermal probe is installed 40 to 100 metres deep in the ground, the surface area required is comparatively small.

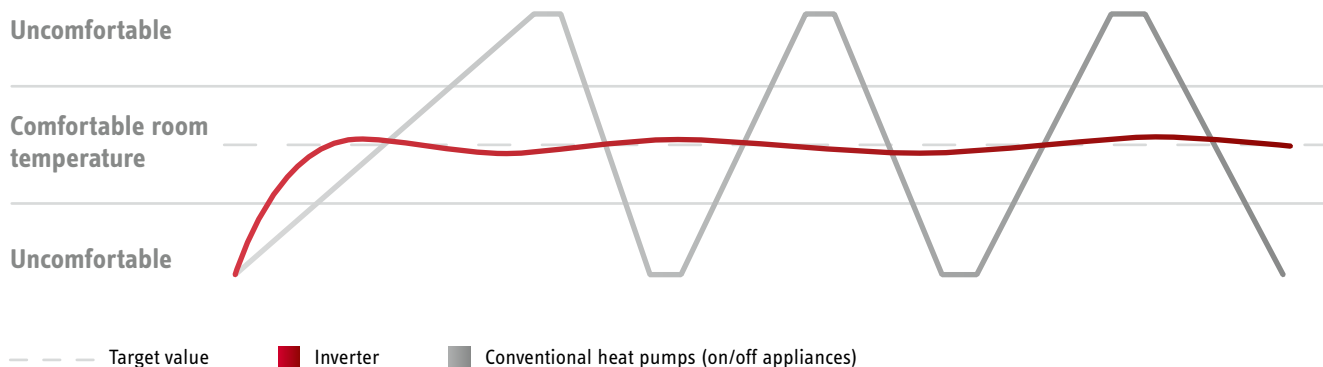
## Inverter technology – keeping a good balance

Conventional heat pumps are either on or off. By contrast, our heat pumps with inverter technology are much more sophisticated. They expertly deliver precisely the output needed throughout your home for a comfortable indoor environment. This is not only more energy efficient, but also much less noisy. This is because the fan and compressor operate, on average, with a lower output and are consequently much quieter.

## Green technology with impressive properties

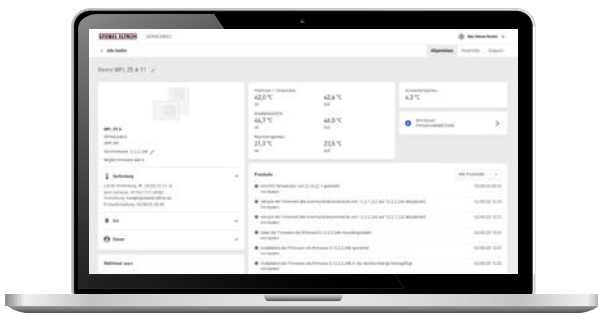
- › Output is continuously matched to your requirements
- › Higher efficiency in the partial load range
- › Very quiet
- › Top technology developed from many years of experience
- › Improved heating output and efficient energy consumption

## Inverter technology compared to conventional heat pumps



# Get a feel-good temperature in your home easily and conveniently

Heating control from anywhere for extra convenience



## ISG SERVICEWELT

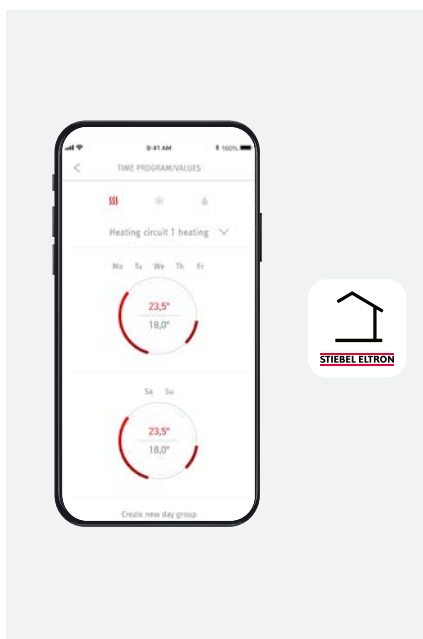
If your heat pump system is connected to your home network via an Internet Service Gateway (ISG), you can conveniently control it using your PC, laptop or tablet.

- › Your personal service portal for your heating system
- › Local homepage for the appliance
- › Data can be enabled for the SERVICEWELT portal at any time

Activate now  
[www.stiebel-eltron.de/  
servicewelt](http://www.stiebel-eltron.de/servicewelt)



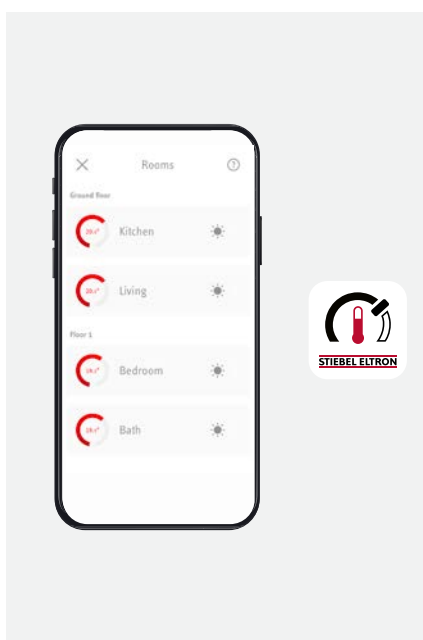




### MyStiebel app<sup>1)</sup>

The MyStiebel app allows you to set the comprehensive functions of your STIEBEL ELTRON heat pump easily and intuitively – even when away from home. Besides controlling your heating, cooling and hot water, you can also configure and store individual time programs in the MyStiebel app.

- › Easy operation of the heat pump controller – even when away from home
- › Convenient settings for heating, cooling and hot water
- › ECO mode for efficient operation



### EASYTRON app<sup>1) 2)</sup>

With our intelligent EASYTRON Connect individual room control, a different feel-good temperature can be set for each connected room – conveniently via app, even when away from home. The system can also communicate with STIEBEL ELTRON heat pumps to reduce energy consumption.

- › Set and adjust the temperature in individual rooms conveniently via smartphone app and save energy
- › Maximum efficiency through connection to a STIEBEL ELTRON heat pump system



<sup>1)</sup> The ISG Internet Service Gateway is required to use the app. For information on compatibility and availability, please visit <http://www.stiebel-eltron.com/iotcompatibility>

<sup>2)</sup> Further components are necessary to operate the system.

# Make the best choice for all your plans

Whether you are working on a new build or a modernisation project, you will find the right solution for every application in our range of ground source heat pumps. Our appliances are suitable for detached houses, apartment buildings and commercial premises, as they are powerful and highly efficient.

## Ground source heat pumps



	Seite 10 HPG-I CS Premium	Seite 10 HPG-I S Premium	Seite 12 HPG-I DCS Premium
<b>Model</b>			
Energy efficiency class, W55/W35	A+++/A+++	A+++/A+++	A+++/A+++
Detached and two-family house	■	■	■
Apartment building	■	■	
Non-residential building			
New build   modernisation	■   ■	■   ■	■   ■
ISG-capable   option for: - PV self-consumption <sup>1)</sup> - mobile control	■ ■ ■	■ ■ ■	■ ■ ■
Heating   cooling	■   ■	■   -	■   ■
Integral DHW cylinder			■
Indoor installation	■	■	■
Outdoor installation			
Can be combined with other heat generators	■	■	
Product class	Premium	Premium	Premium

<sup>1)</sup> For system and country-specific compatibility and availability, please note the information at: [www.stiebel-eltron.de/iotcompatibility](http://www.stiebel-eltron.de/iotcompatibility).



**Seite 12**

**HPG-I DS  
Premium**

A+++/A+++

■

■ | ■

■

■

■

■ | -

■

■

Premium

**Seite 14**

**WPE-I 33-87 H 400  
Premium**

A+++/A+++

■

■

■ | ■

■

■

■

■ | -

■

Premium

**Seite 15**

**WPE-I 05-17 H 400 Plus**

A++/A+++

■

■ | ■

■

■

■

■ | ■

■

Plus

**Seite 16**

**WPE-I 05-10 HW 400  
Plus**

A+++/A+++

■

■ | ■

■

■

■

■ | ■

■

■

Plus

**Seite 17**

**WPF 27 HT**

A++/A++

■

■

■ | ■

■

■

■

■ | -

■

■

■

Plus





# Open your door to comfortable living

Ground source heat pump HPG-I 04-15 CS Premium

Boost your home comforts with this ground source heat pump. The appliance with inverter technology draws heat from the ground for your heating and hot water system. We also offer a version that provides passive cooling for your house as and when required. In both summer and winter, this ingenious piece of engineering elevates your living comfort to new levels, thanks to its consistent heating output with high flow temperatures.

#### Make the most of this all-rounder

One of our five output sizes will be just right for you, whether it's for a new building or a modernisation project. The inverter technology guarantees you the exact heating output you want at any given time. This reduces your energy consumption to a minimum, saves you money and even optimises your room climate - all at the same time.

#### What convinces this product

- › Ground source heat pump installed indoors for heating, with cooling as an optional extra
- › Optimum output and maximum efficiency thanks to inverter technology
- › Futureproof and eco-friendly refrigerant
- › Optional integration into the home network and control via smartphone

---

This product is available in various designs.



Cooling



Modernisation



New building



Indoor installation



High efficiency

# Feel the warm glow of a sustainable future

Ground source heat pump HPG-I 04-15 DCS Premium

This heat pump allows you to combine comfort and function in one solution. It uses energy from the ground to heat your central heating water and domestic hot water, plus it contains a DHW cylinder. The inverter technology is so efficient at all times of the year that you save energy and reduce your heating bill. Choosing the passive cooling option gives you an economical alternative that lets you enjoy perfect living comfort even on hot days.

## Doing well for the environment

The eco-friendly and safe refrigerant also contributes to a good domestic energy balance. Furthermore, you're all set for a good night's sleep thanks to the appliance's especially low sound levels.

## What convinces this product

- › Ground source heat pump installed indoors for heating, with cooling as an optional extra
- › Compact design saves space
- › Optimum output and maximum efficiency thanks to inverter technology
- › Futureproof and eco-friendly refrigerant
- › Optional integration into the home network and control via smartphone

---

This product is available in various designs.



Cooling



Modernisation



New building



Indoor installation



High efficiency



# Quality that packs a punch

Ground source heat pump WPE-I 33-87 H 400 Premium



This premium heat pump lives up to the quality implied in its name and gives its all throughout your home. In a cascade, it even supplies apartment buildings and commercial premises with large volumes of central heating water and domestic hot water. Thanks to inverter technology, you can use the appliance in a very versatile way and have the convenient option to control it via smartphone.

#### Discretion you can count on

We have designed this all-rounder to be so robust that it will give you many years of reliable service, yet still blend quietly into the background. You can control your appliance easily and accurately with the handy colour touchscreen.

#### What convinces this product

- › Ground source heat pump installed indoors for room heating and DHW heating
- › Suitable for new build and modernisation projects
- › Suitable for cascades with high output requirements
- › Optimum output and maximum efficiency thanks to inverter technology
- › Low energy costs due to exemplary efficiency
- › Particularly quiet operation
- › Optional integration into the home network and control via smartphone

---

This product is available  
in various designs.



Modernisation



New building



Indoor  
installation



# Opt for flexibility

Ground source heat pump WPE-I 05-17 H 400 Plus



This product is available  
in various designs.

This powerhouse works highly efficiently to supply your home with heat and hot water. You have complete freedom of choice when it comes to the cylinder – combine it with any of the DHW cylinders in our range. Since the key components come ready integrated, it will be a quick and simple matter for your installer to get this heat pump up and running for you.

#### Convenient touch control

Convenient control via the innovative heat pump manager to ensure a pleasant room climate that suits your requirements at all times. Simple and intuitive operation via touchscreen with easy-to-read colour display.

#### What convinces this product

- › Ground source heat pump installed indoors for room heating and DHW heating
- › Suitable for new build and modernisation projects
- › Also suitable for larger buildings
- › Low energy costs due to exemplary efficiency
- › High efficiency through optimally matched components and high grade technology
- › Very high hot water convenience thanks to flow temperature of up to 62 °C
- › Cooling function possible thanks to integrated control technology (additional components necessary)



Modernisation



New building



Indoor  
installation



# Watch this space

Ground source heat pump WPE-I 05-10 HW 400 Plus

Thanks to its extremely compact design, this heat pump will bring you convenience and allow you to free up valuable space. All the important components are already integrated, such as a cylinder for up to 240 litres of hot water. With a SCOP (seasonal coefficient of performance) of up to five, this multi-talented appliance also shows you what efficiency means. This attractively priced heat pump not only helps you save money, but also installation space.

## Functional design

You control the heat pump manager conveniently and intuitively via a colour touchscreen. This feature is just as unobtrusive as the timeless product design.

## What convinces this product

- › Ground source heat pump installed indoors for room heating and DHW heating
- › Suitable for new build and modernisation projects
- › Compact solution with key components integrated to save space
- › Low energy costs due to exemplary efficiency
- › High efficiency through optimally matched components and high grade technology
- › Very high hot water convenience thanks to flow temperature of up to 62 °C
- › Cooling function possible thanks to integrated control technology (additional components necessary)

---

This product is available  
in various designs.



# Think big – go small

Ground source heat pump WPF 27 HT



This compact heat pump meets your expectations of heating technology in large residential complexes, commercial premises and industrial buildings. As it can be installed either indoors or out, it is highly flexible. You need even less space if you install two appliances one on top of the other.

#### **Clever combinations**

Combined with a suitable appliance, your heat pump cascade can be put to excellent use to provide hot water. The high flow temperatures ensure that your level of hot water convenience remains consistently high.

#### **What convinces this product**

- › Ground source heat pump for heating, installed indoors or outdoors
- › Outdoor installation for more indoor space
- › Suitable for new build and modernisation projects
- › Suitable for cascades with high output requirements
- › Suitable for large residential complexes, commercial premises and industrial buildings
- › Can be stacked to save space
- › Pleasantly quiet operation
- › Web-based control with Internet Service Gateway via computer

---

This product is available in various designs.



Cooling



Modernisation



New building



Indoor installation



# Customise your equipment to suit your requirements

With our extensive range of accessories, you can tailor your level of comfort to suit your requirements. Regardless of whether you are using individual appliances or complex systems – we can supply you with everything from one source. All our components are perfectly matched to each other so that you can continue to enjoy your STIEBEL ELTRON products for many years to come.

## WPMsystem

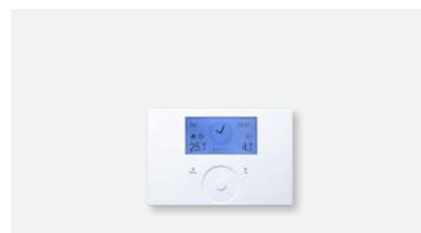
---



- › Heat pump manager (WPM)
- › With integral programming unit
- › For controlling extensive functions



- › Extension controller (WPE)
- › To control additional functions
- › With universal differential controller
- › Integration of a stove possible



- › Touch-Wheel remote control (FET)
- › To set the exact comfort temperature you require
- › With illuminated graphic display
- › Shows the room temperature, room humidity, time and outside temperature

## Ground source heat pump product comparison

		<b>HPG-I 04 CS Premium</b>	<b>HPG-I 06 CS Premium</b>	<b>HPG-I 08 CS Premium</b>	<b>HPG-I 12 CS Premium</b>	<b>HPG-I 15 CS Premium</b>
<b>Part number</b>		<b>202627</b>	<b>202628</b>	<b>202629</b>	<b>202630</b>	<b>202631</b>
Energy efficiency class		A+++	A+++	A+++	A+++	A+++
Heating output at B0/W35 (EN 14511)	kW	1.96	2.37	2.78	4.19	5.18
Heating output at B0/W35 (min./max.)	kW	1.0-4.2	1.0-6.6	1.0-7.6	2.1-12.7	2.1-14.8
COP at B0/W35 (EN 14511)		4.60	4.60	4.67	5.01	4.86
Cooling capacity at B15/W23	kW	2.5	3	4	6	8
SCOP 35 °C (EN 14825)		5.07	5.20	5.12	5.59	5.44
Sound power level (EN 12102)	dB(A)	38-40	38-43	38-45	39-46	39-47
Max. application limit on the heating side	°C	75	75	75	75	75
Height	mm	1369	1369	1369	1369	1369
Width	mm	598	598	598	598	598
Depth	mm	658	658	658	658	658
Weight	kg	180	180	180	190	190
Refrigerant		R454C	R454C	R454C	R454C	R454C
Energy efficiency class, room heating in moderate climates, average temperature applications		A+++	A+++	A+++	A+++	A+++
Product class Premium/Plus/Trend		■/-/-	■/-/-	■/-/-	■/-/-	■/-/-

		<b>HPG-I 04 S Premium</b>	<b>HPG-I 06 S Premium</b>	<b>HPG-I 08 S Premium</b>	<b>HPG-I 12 S Premium</b>	<b>HPG-I 15 S Premium</b>
<b>Part number</b>		<b>202617</b>	<b>202618</b>	<b>202619</b>	<b>202620</b>	<b>202621</b>
Energy efficiency class		A+++	A+++	A+++	A+++	A+++
Heating output at B0/W35 (EN 14511)	kW	1.96	2.37	2.78	4.19	5.18
Heating output at B0/W35 (min./max.)	kW	1.0 - 4.2	1.0 - 6.6	1.0-7.6	2.1-12.7	2.1 - 14.8
COP at B0/W35 (EN 14511)		4.60	4.60	4.67	5.01	4.86
SCOP 35 °C (EN 14825)		5.07	5.20	5.12	5.59	5.44
Sound power level (EN 12102)	dB(A)	38-40	38-43	38-45	39-46	39-47
Max. application limit on the heating side	°C	75	75	75	75	75
Height	mm	1369	1369	1369	1369	1369
Width	mm	598	598	598	598	598
Depth	mm	658	695	695	695	695
Weight	kg	180	180	180	190	190
Refrigerant		R454C	R454C	R454C	R454C	R454C
Energy efficiency class, room heating in moderate climates, average temperature applications		A+++	A+++	A+++	A+++	A+++
Product class Premium/Plus/Trend		■/-/-	■/-/-	■/-/-	■/-/-	■/-/-

## Ground source heat pump product comparison

		HPG-I 04 DCS Premium	HPG-I 06 DCS Premium	HPG-I 08 DCS Premium	HPG-I 12 DCS Premium	HPG-I 15 DCS Premium
<b>Part number</b>		<b>202632</b>	<b>202633</b>	<b>202634</b>	<b>202635</b>	<b>202636</b>
Energy efficiency class		A+++	A+++	A+++	A+++	A+++
Heating output at B0/W35 (EN 14511)	kW	1.96	2.37	2.78	4.19	5.18
Heating output at B0/W35 (min./max.)	kW	1.0-4.2	1.0-6.6	1.0-7.6	2.1-12.7	2.1-14.8
COP at B0/W35 (EN 14511)		4.60	4.60	4.67	5.01	4.86
Cooling capacity at B15/W23	kW	2.5	3	4	6	8
SCOP 35 °C (EN 14825)		5.07	5.20	5.12	5.59	5.44
Sound power level (EN 12102)	dB(A)	43-46	43-48	43-48	43-49	43-49
Max. application limit on the heating side	°C	75	75	75	75	75
Height	mm	1937	1937	1937	1937	1937
Width	mm	600	600	600	600	600
Depth	mm	703	703	703	703	703
Nominal capacity	l	175	175	175	162	162
Weight	kg	265	265	265	275	275
Refrigerant		R454C	R454C	R454C	R454C	R454C
Load profile		XL	XL	XL	XL	XL
Energy efficiency class, room heating in moderate climates, average temperature applications		A+++	A+++	A+++	A+++	A+++
Energy efficiency class, DHW heating in moderate climates		A	A	A	A	A
Product class Premium/Plus/Trend		■/-/-	■/-/-	■/-/-	■/-/-	■/-/-

		HPG-I 04 DS Premium	HPG-I 06 DS Premium	HPG-I 08 DS Premium	HPG-I 12 DS Premium	HPG-I 15 DS Premium
<b>Part number</b>		<b>202622</b>	<b>202623</b>	<b>202624</b>	<b>202625</b>	<b>202626</b>
Energy efficiency class		A+++	A+++	A+++	A+++	A+++
Heating output at B0/W35 (EN 14511)	kW	1.96	2.37	2.78	4.19	5.18
Heating output at B0/W35 (min./max.)	kW	1.0-4.2	1.0-6.6	1.0-7.6	2.1-12.7	2.1-14.8
COP at B0/W35 (EN 14511)		4.60	4.60	4.67	5.01	4.86
SCOP 35 °C (EN 14825)		5.07	5.20	5.12	5.59	5.44
Sound power level (EN 12102)	dB(A)	43-46	43-48	43-48	43-49	43-49
Height	mm	1937	1937	1937	1937	1937
Width	mm	600	600	600	600	600
Depth	mm	703	703	703	703	703
Nominal capacity	l	175	175	175	162	162
Weight	kg	265	265	265	275	275
Refrigerant		R454C	R454C	R454C	R454C	R454C
Load profile		XL	XL	XL	XL	XL
Energy efficiency class, room heating in moderate climates, average temperature applications		A+++	A+++	A+++	A+++	A+++
Energy efficiency class, DHW heating in moderate climates		A	A	A	A	A
Product class Premium/Plus/Trend		■/-/-	■/-/-	■/-/-	■/-/-	■/-/-

## Ground source heat pump product comparison

		<b>WPE-I 33 H 400 Premium</b>	<b>WPE-I 44 H 400 Premium</b>	<b>WPE-I 59 H 400 Premium</b>	<b>WPE-I 87 H 400 Premium</b>
<b>Part number</b>		<b>201412</b>	<b>201413</b>	<b>201414</b>	<b>201415</b>
Energy efficiency class		A+++	A+++	A+++	A+++
Heating output at B0/W35 (EN 14511)	kW	20.18	26.71	35.60	52.00
Heating output at B0/W35 (min./max.)	kW	10-33	11-44	14-59	21-87
COP at B0/W35 (EN 14511)		4.73	4.60	4.50	4.71
SCOP 35 °C (EN 14825)		5.55	5.65	5.19	5.17
Sound power level (EN 12102)	dB(A)	41-56	41-56	46-61	46-63
Max. application limit on the heating side	°C	65	65	65	65
Height	mm	1723	1723	1742	1742
Width	mm	692	692	900	900
Depth	mm	803	803	848	848
Weight	kg	300	300	430	550
Refrigerant		R410A	R410A	R410A	R410A
Energy efficiency class, room heating in moderate climates, average temperature applications		A+++	A+++	A+++	A+++
Product class Premium/Plus/Trend		■/-/-	■/-/-	■/-/-	■/-/-

		<b>WPE-I 05 HW 400 Plus</b>	<b>WPE-I 07 HW 400 Plus</b>	<b>WPE-I 10 HW 400 Plus</b>
<b>Part number</b>		<b>205834</b>	<b>205835</b>	<b>205836</b>
Energy efficiency class		A++	A++	A++
Heating output at B0/W35 (EN 14511)	kW	5.56	7.35	9.81
COP at B0/W35 (EN 14511)		4.40	4.62	4.76
SCOP 35 °C (EN 14825)		4.74	4.96	5.09
Sound power level (EN 12102)	dB(A)	42	42	42
Max. application limit on the heating side	°C	60	60	60
Height	mm	1860	1860	1860
Width	mm	600	600	600
Depth	mm	707	707	707
Nominal capacity	l	184	184	184
Weight	kg	148	165	170
Refrigerant		R452B	R452B	R452B
Load profile		XL	XL	XL
Energy efficiency class, room heating in moderate climates, average temperature applications		A++	A++	A++
Energy efficiency class, DHW heating in moderate climates		A	A	A
Product class Premium/Plus/Trend		-/■/-	-/■/-	-/■/-





# Sustainable comfort

Clean electricity is the future. That's why we focus worldwide on electricity-based and highly efficient green tech solutions for hot water, heating, ventilation and cooling – so that you can enjoy sustainable comfort at home. As a family business, we act for the future – yours and ours.



[www.stiebel-eltron.com/  
about-stiebel-eltron](http://www.stiebel-eltron.com/about-stiebel-eltron)

At STIEBEL ELTRON, we offer highly efficient products and services for heating, cooling, ventilation and hot water in buildings. We maintain a clear focus and promote the energy transition: renewable electricity is the driving force behind our products. With more than 6000 employees, we are committed to innovation and always strive for better solutions.

From design and manufacture through to servicing your appliance, we systematically apply our experience from 100 years of hot water heating, almost 50 years of heat pump engineering and 30 years of ventilation technology to offer you futureproof systems. Our goal is to deliver greater convenience and benefits in all our homes!

You can see first hand our commitment to green tech by visiting the Energy Campus at our head office in Holzminden, Germany. This training and communication centre is our flagship project for sustainable and resource-efficient construction. It combines the highest standards of architectural and communication quality. As a PlusEnergy building, it generates more energy than it consumes. Come and experience what our name stands for – in theory and practice.

## Partnership with vision

We are a premium and sustainability partner of the Bundesliga football team Borussia Dortmund. As a heating expert, we are supporting the BVB on its path to a CO<sub>2</sub>-free future.

**STIEBEL ELTRON**



**SUSTAINABILITY  
PARTNER**

**100YRS**  
1924-2024



For new and interesting information on our products, visit [www.stiebel-eltron.com](http://www.stiebel-eltron.com) or consult your local trade partner.



[www.stiebel-eltron.com/  
international-offices](http://www.stiebel-eltron.com/international-offices)

**STIEBEL ELTRON**



**PREMIUM  
PARTNER**

**STIEBEL ELTRON International GmbH | Dr.-Stiebel-Straße 33 | 37603 Holzminden | Germany | [www.stiebel-eltron.com](http://www.stiebel-eltron.com)**

**Legal notice** | In spite of our careful efforts, we are not liable for any inaccuracies in the content of this brochure. Information concerning equipment levels and specifications is subject to modification. The equipment features described in this brochure are non-binding regarding the specification of the final product. Due to our policy of ongoing improvement, some features may be changed or even removed. Please consult your local dealer for information about the very latest equipment features. The images in this brochure are for reference only. The illustrations also contain installation components, accessories and special equipment that do not form part of the standard delivery. Reprinting of all or part of this brochure is only lawful with the publisher's express permission.